



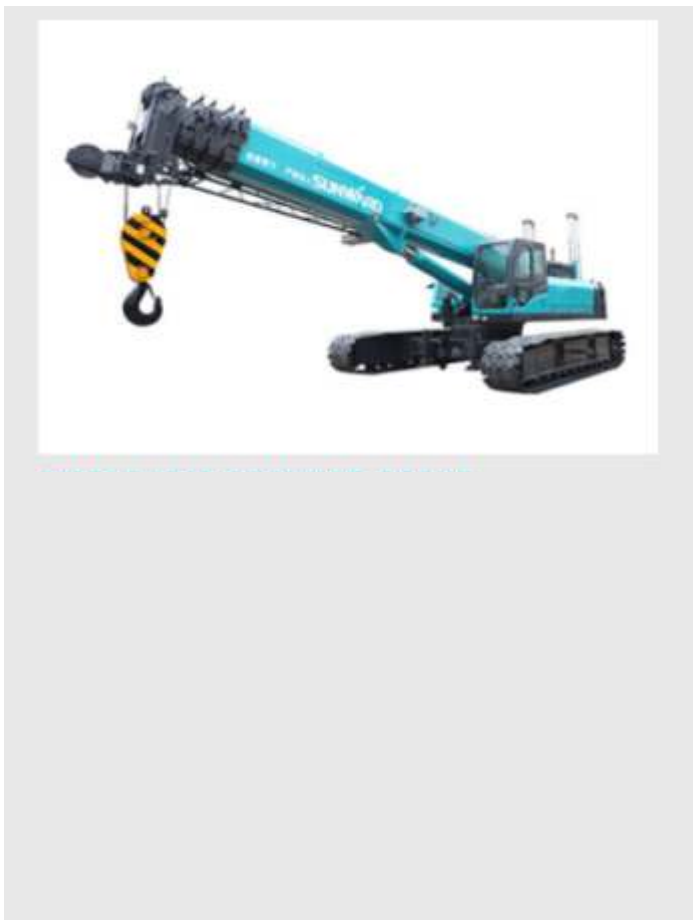
**GTM**  **Heavylift**

**GUINDASTE TELESCÓPICO SOBRE ESTEIRAS**

## Vantagens do guindaste sobre esteiras

- rapidez. Maior rapidez operacional por dispensar o uso de estabilizadores hidráulicos;
- eficiência. Melhor aproximação da área de trabalho encurtando raio de carga e aumentando a capacidade de levantamento;
- versatilidade. Permite seu deslocamento com carga de até 80% da sua capacidade nominal.

# SWTC 16B



### Performance characteristics:

Size	Size (LxWxH)	mm	12200x2800x3120
	Track base	mm	3820
	Crawler length	mm	4580
	Ground clearance of platform	mm	1192
	Tail swing radius	mm	3540
	Chassis width	mm	2800/3000
	Track width	mm	700
	Min. ground clearance	mm	458
	Track height	mm	985
	The top of the operating room is off the ground	mm	3120
Parameters	Max. lifting load	t	16
	Max. torque of basic boom	t.m	61.2
	Max. lifting force of full extending boom	t.m	30.8
	Length of basic boom	m	10
	Longest arm length	m	31.3
	Max. lifting height of the basic arm	m	10.1
	Max. lifting height of the longest arm	m	31.5
Work Parameters	Boom rising / descending time	s	40/35
	Boom extending / retracting time	s	50/40
	Slewing speed	rpm	2.5
	Max. line speed	m/min	140
	Traveling speed	km/h	4
	Micro-traveling speed	km/h	2.4
	Total weight	t	28.5
	Max. gradeability	%	40
	Ground pressure	Mpa	0.053
Engine	Brand		Cummins
	Model		QSB5.9-C180
	Operation type		turbo / air-air intercooler
	Displacement	L	5.9
	Power / Speed	kW/rpm	132/2200
	Full tank capacity	L	330

## Vantagens do guindaste sobre esteiras

- rapidez. Maior rapidez operacional por dispensar o uso de estabilizadores hidráulicos;
- eficiência. Melhor aproximação da área de trabalho encurtando raio de carga e aumentando a capacidade de levantamento;
- versatilidade. Permite seu deslocamento com carga de até 80% da sua capacidade nominal.

# SWTC 26



### Performance characteristics:

Size	Size (LxWxH)	mm	12870x2000x3100
	Track base	mm	3045
	Crawler length	mm	4610
	Ground clearance of platform	mm	1185
	Tail swing radius	mm	3875
	Chassis width	mm	2000/3050
	Track width	mm	700
	Min. ground clearance	mm	450
	Track height	mm	900
	The top of the operating room is off the ground	mm	3190
Parameters	Max. lifting load	t	26
	Max. torque of basic boom	t.m	93
	Max. lifting force of full extending boom	t.m	45
	Length of basic boom	m	10.0
	Longest arm length	m	33.1
	Max. lifting height of the basic arm	m	10.5
Work Parameters	Max. lifting height of the longest arm	m	33
	Boom rising / descending time	s	48/48
	Boom extending / retracting time	s	60/55
	Slewing speed	rpm	2.2
	Max. line speed	m/min	125
	Traveling speed	km/h	2.5
Micro-traveling speed	km/h	1.25	
Total weight		t	34.0
Max. gradeability		%	40
Ground pressure		Mpa	0.092
Engine	Brand	Cummins	
	Model	QSB9.7-C190	
	OperationType	water cooled / intercooler / turbol	
	Displacement	L	6.7
	Power / Speed	KW/rpm	142/2200
Full tank capacity		L	450

## Vantagens do guindaste sobre esteiras

- rapidez. Maior rapidez operacional por dispensar o uso de estabilizadores hidráulicos;
- eficiência. Melhor aproximação da área de trabalho encurtando raio de carga e aumentando a capacidade de levantamento;
- versatilidade. Permite seu deslocamento com carga de até 80% da sua capacidade nominal.

# SWTC 35B



### Performance characteristics:

Size	Size (LxWxH)	mm	13390x3300x3090
	Track base	mm	4865
	Crawler length	mm	5720
	Ground clearance of platform	mm	1150
	Tail swing radius	mm	4200
	Chassis width	mm	3300/4560
	Track width	mm	760
	Min. ground clearance	mm	392
	Track height	mm	980
The top of the operating room is off the ground	mm	3090	
Parameters	Max. lifting load	t	35
	Max. torque of basic boom	t.m	135
	Max. lifting force of full extending boom	t.m	83
	Length of basic boom	m	10.8
	Longest arm length	m	40
	Max. lifting height of the basic arm	m	10.8
Max. lifting height of the longest arm	m	39.6	
Work Parameters	Boom rising / descending time	s	46/90
	Boom extending / retracting time	s	80/125
	Slewing speed	rpm	1.5
	Max. line speed	m/min	125
	Traveling speed	km/h	2.5
Micro-traveling speed	km/h	1.5	
Total weight	t	49.3	
Max. gradeability	%	40	
Ground pressure	Mpa	0.076	
Engine	Brand		Cummins
	Model		QSB9.7-C215
	Operation type		water cooled / intercooler / turbo
	Displacement	L	6.7
	Power / Speed	kW/rpm	158/2000
Full tank capacity	L	540	

## Vantagens do guindaste sobre esteiras

- rapidez. Maior rapidez operacional por dispensar o uso de estabilizadores hidráulicos;
- eficiência. Melhor aproximação da área de trabalho encurtando raio de carga e aumentando a capacidade de levantamento;
- versatilidade. Permite seu deslocamento com carga de até 80% da sua capacidade nominal.

# SWTC 55B



### Performance characteristics:

Size	Size (LxWxH)	mm	12200x2800x3120
	Track base	mm	3820
	Crawler length	mm	4580
	Ground clearance of platform	mm	1192
	Tail swing radius	mm	3540
	Chassis width	mm	2800/3000
	Track width	mm	700
	Min. ground clearance	mm	458
	Track height	mm	985
	The top of the operating room is off the ground	mm	3120
Parameters	Max. lifting load	t	16
	Max. torque of basic boom	t.m	61.2
	Max. lifting force of full extending boom	t.m	30.6
	Length of basic boom	m	10
	Longest arm length	m	31.3
	Max. lifting height of the basic arm	m	10.1
	Max. lifting height of the longest arm	m	31.5
Work Parameters	Boom rising / descending time	s	40/35
	Boom extending / retracting time	s	50/40
	Slewing speed	rpm	2.5
	Max. line speed	m/min	140
	Traveling speed	km/h	4
	Micro-traveling speed	km/h	2.4
	Total weight	t	28.5
	Max. gradesability	%	40
	Ground pressure	Mpa	0.053
Engine	Brand		Cummins
	Model		QSB5.9-C180
	Operation type		turbo / air-air intercooler
	Displacement	L	5.9
	Power / Speed	kW/rpm	132/2200
	Full tank capacity	L	330

## Vantagens do guindaste sobre esteiras

- rapidez. Maior rapidez operacional por dispensar o uso de estabilizadores hidráulicos;
- eficiência. Melhor aproximação da área de trabalho encurtando raio de carga e aumentando a capacidade de levantamento;
- versatilidade. Permite seu deslocamento com carga de até 80% da sua capacidade nominal.

# SWTC 75B



### Performance characteristics:

Size	Size (LxWxH)	mm	14400x3300x3360
	Track base	mm	5300
	Crawler length	mm	5200
	Ground clearance of platform	mm	1280
	Tail swing radius	mm	4745
	Chassis width	mm	3300/4060
	Track width	mm	760
	Min. ground clearance	mm	250
	Track height	mm	1005
	The top of the operating room is off the ground	mm	3120
Parameters	Max. lifting load	t	75
	Max. torque of basic boom	t.m	258.5
	Max. lifting force of full extending boom	t.m	124.9
	Length of basic boom	m	11.8
	Longest arm length	m	44.2
	Max. lifting height of the basic arm	m	11.2
Work Parameters	Max. lifting height of the longest arm	m	43.6
	Boom rising / descending time	s	58/57
	Boom extending / retracting time	s	90/85
	Slewing speed	rpm	1.5
	Max. line speed	m/min	125
Total weight	Traveling speed	km/h	2.1
	Micro-traveling speed	km/h	1.4
	Total weight	t	58.3
	Max. gradeability	%	40
	Ground pressure	Mpa	0.062
Engine	Brand		Cummins
	Model		QSB6.7-C260
	Operation type		turbo / air-air intercooler
	Displacement	L	6.7
	Power / Speed	kW/rpm	194/2200
Full tank capacity	L	600	

